

# SIC Report to Parents

Riverside Middle School

615 Hammett Bridge Road  
Greer, SC 29650

864-355-7900

<https://www.greenville.k12.sc.us/rms/>

## About Riverside Middle

At Riverside Middle School, we inspire, support, and prepare students for success by creating a safe, caring, and academically challenging environment where all students can grow. As a proud **Leader in Me** school, we are committed to growing innovative leaders by building strong character, leadership skills, creativity, and student voice.

At RMS, relationships come first. Our teachers and staff work together with families to support the academic, social, and emotional growth of every child while creating meaningful learning experiences that meet students' needs.

Students have opportunities to thrive through academics, fine arts, athletics, technology, leadership experiences, and high school credit courses. From our award-winning arts and athletic programs to Makerspace, robotics, mentoring, and community partnerships, Riverside Middle is dedicated to helping students **learn today and lead tomorrow**.



## What is an SIC?

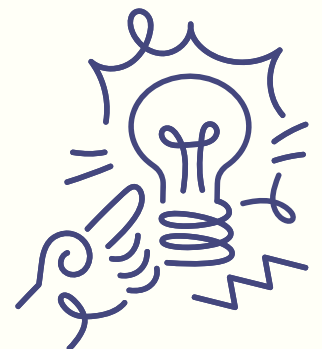
A School Improvement Council (SIC) is an important part of a school because it brings together parents, educators, community members, and local businesses to help a school grow and improve. SICs give schools valuable feedback, support school goals, and help strengthen connections between the school and the community.

The members of RMS's SIC are Cara Fern (community member & chair), Sara Williams (community member), Melissa Bache (parent), Matthew Keith (principal), Kristen Bell (assistant principal), Stacy Hall (counselor), and Sara Glenn (librarian).

## Why and How to Join SIC

For businesses, being part of the Riverside Middle School SIC is a great way to invest in students and make a positive impact in the Greer community. Business partners can share ideas, support school initiatives, and help students see real-world connections between school and future careers. Their involvement also helps create a strong, positive school culture built on collaboration, relationships, and shared success. When schools and businesses work together, everyone benefits — especially students.

If you are interested in joining the RMS SIC, please contact Kristen Bell at [kebell@greenville.k12.sc.us](mailto:kebell@greenville.k12.sc.us).



# SIC Report to Parents



## Academics

- Top performing Greenville County middle school on district benchmarks and SCREADY Math, ELA, Writing, and Science
- Focus on project based and hands on learning
- Offers honors level and high school credit courses
- Opportunities to participate in curriculum based field trips and guest lectures in all grade levels
- Exploratory cycle classes in ELA, Math, and Humanities/Science offered in all grades
- Cross-curricular, culminating Capstone project in all grade levels

## Arts & Athletics

- Students selected by audition for All-State, All-County, and All-Region in Orchestra & Band
- Superior Rating with Distinction Rating at Concert Performance Assessment in Orchestra & Band
- Guitar offered in grades 6, 7, & 8
- Student-centered productions offered in winter and spring
- High school credit Theatre I and Chorus I classes offered in 8<sup>th</sup> grade
- Comprehensive health education & physical education curriculum that extends beyond the traditional to include team-building, archery, and lacrosse
- Athletic programs include baseball, basketball, soccer, volleyball, and students participate in high school sports

## Leadership Development

- The Leader in Me
- Student Lighthouse Committee
- Student Council
- Student club opportunities
- Royal Ambassador Program
- Award-winning World VEX Robotics Teams
- Student Morning News Show
- MakerSpace
- Student staffed Yearbook

## Community Involvement

- SIC
- PTSA
- Lighthouse Committees
- Successful community fundraising campaigns for technology, materials, improvement to the learning environment, supplies, and teacher support
- Rising Sixth Grade parent orientation
- Back to School Night
- Clio Society, which collaborates with PTSA to celebrate multiculturalism in our RMS community
- Fall for Riverside & Community Fest